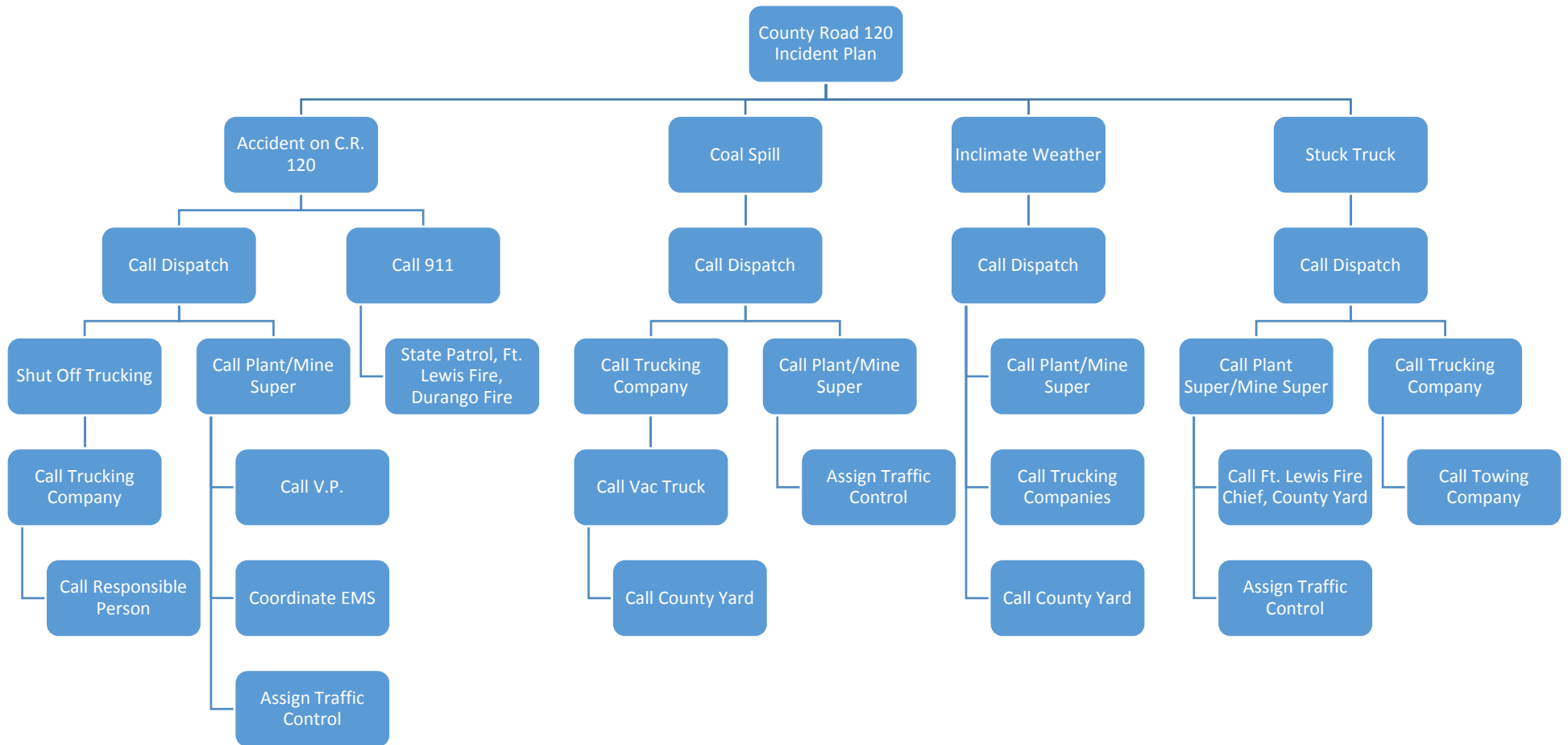


Emergency Procedure Manual

Received
March 17, 2016



Emergency Procedure Manual

County Road 120 Incident Plan

Accident:

1. Call 911
2. Call GCC Energy Dispatch

Dispatch:

1. Collect information as specified for this type of incident (see checklist)
2. Call 911 if not already done
3. Call Plant Supervisor & Mine Superintendent
4. Call trucking company, shut off trucks until accident is cleared, hold any coal trucks at the mine
5. Notify Responsible Person on duty
6. Send employee traffic, vendors, etc. out on C.R. 120 South

Plant Supervisor:

1. Coordinate EMS
2. Send a designee to C.R. 120/S.H. 140 Intersection to halt traffic if road is blocked
3. Post a designee at Mine driveway to reroute local traffic as necessary
4. Assign traffic control

Mine Superintendent:

1. Notify Vice President

Coal/Hazardous Material Spill:

Call GCC Energy Dispatch

Dispatch:

1. Collect information as specified for type of incident (see checklist)
2. Call Plant Superintendent & Mine Superintendent
3. Call trucking company
4. Coal Spill: Call vacuum truck company
5. Hazardous Material spill: Refer to the SPCC Plan (Section 10 of this Manual)
6. Call County Yard

Plant Superintendent:

1. Contact La Plata County Manager of Emergency Services
2. Assign traffic control
3. Supervise cleanup

Stuck Truck:

Call GCC Energy Dispatch

Dispatch:

1. Collect information as specified for this type of incident (see checklist)
2. Call Plant superintendent & Mine Superintendent
3. Call trucking company
4. Call towing company

Plant Supervisor:

1. Call Ft. Lewis Fire Chief
2. Assign traffic control

Emergency Procedure Manual

Inclement Weather:

Call GCC Energy Dispatch

Dispatch:

1. Call Plant Superintendent for instruction
2. Call trucking company, shut off trucks
3. Call County Yard

Phone numbers

Mine superintendent
Plant superintendent

970-403-4395
970-903-5716

La Plata county contact information

Ft. Lewis Fire Chief
County yard
Manager of emergency services

970-588-3400 or 970-759-1153
970-588-8312
970-382-6250

Towing Company

Bo Deans
McKnight's

970-375-6221
970-247-4447

Vac Truck

Riley Industrial
Badger

505-327-4947
970-884-4388

Emergency Procedure Manual

County Road 120 Incident Plan

Check List

Dispatcher, Print _____ Sign _____

Name of reporting party _____

Phone number of reporting party (____) _____ - _____

Date ____ / ____ / ____ Time ____ : ____ AM / PM

Location of incident _____

Accident : Call 911 if not already done

Number of persons injured _____

Types of injuries if known _____

Number and types of vehicles _____

Call : Plant Superintendent Time : AM/PM

Shut off trucking, hold trucks at mine, until accident is cleared

Others contacted _____ Time : AM/PM

Send employee traffic, vendors, etc. out on CR 120 South

If traffic control is needed, Implement

Coal Spill : Call : Plant Superintendent Time : AM/PM

Contact affiliated trucking company Time : AM/PM

Verify Vac truck has been contacted Time : AM/PM

If traffic control is needed, Implement

Hazardous Material Spill : Type of material _____

Refer to SPCC Plan (Section 10)

Call : Plant Superintendent Time : AM/PM

Contact affiliated trucking company Time : AM/PM

If traffic control is needed, Implement

Stuck Truck Call : Plant Superintendent Time : AM/PM

Contact affiliated trucking company Time : AM/PM

Verify Tow truck has been contacted Time : AM/PM

If traffic control is needed, Implement

Fill out off site incident report

Comments : _____
